

Portal Based Smart Billing System for Energy Meter

Chirag Jain, Akshay Sharma, Bhanu Pratap Singh Rathore, Deepika Kerwal, Abhinandan Jain, Neeraj Jain

Department of Electronics and Communication Engineering, Swami Keshvanand Institute of Technology, Management and Gramothan, Jaipur, India

E-mail : 31chiragjain@gmail.com

Received 19.10.2021, received in revised form 28.12.2021, accepted 11.01.2022

DOI: 10.47904/IJSKIT.12.1.2022.40-44.

Abstract: The aim of this paper is to develop a system that will reduce the power loss due to power thefts and the hassle of paying the electricity bill. Consumption of energy is increasing due to multiple factors and to improve the energy efficiency, consumers need to be more aware of their energy consumption. Recently, utilities have started developing new electric energy meters which are known as smart meters. Smart meters will enable two-way and real-time communication between the consumers and the provider. The meter that is developed in this paper will compute the energy and transfer the details to the energy provider as well as notify the user via SMS. The traditional system will be replaced with the proposed system, and it enables multiple new features which will be beneficial for both energy provider and user.

Keywords- Arduino UNO, Smart/Energy meter, Optocoupler, GSM module, Relay, LCD.

1. INTRODUCTION

The specific application of this embedded system describes a single-phase energy meter. The components measure the active energy and current. It also allows the users to recharge the account using GSM technology. The system will work as long as the account has pending balance. The system first accepts the request and allows using only limited units of energy as per recharge and then cut off the supply until it is not recharged again. The user can get the information on the registered mobile if anything goes wrong. All the energy meter details can also be seen on the website.

2. LITERATURE SURVEY

Different methods have been implemented and analysed for measuring the energy utilization. This will describe different wireless technology for meter reading. The major wireless technologies like Zig Bee, Global Standard for Mobile communication (GSM), Power Line Communication (PLC), Radio Frequency Identification (RF-ID) method and Bluetooth. The present scenario of these technologies will be present here.

Table 1: Literature Survey

Description	Citation
Main idea is to construct a power line communication (PLC) which will be based on automated meter reading system	[1]
Emphasized on controlling of energy in industry, many experiments and readings has taken before deciding the solution to reduce consumption	[2]
Idea is to collect the data of meter reading using GSM technology	[3]
Presented the design of Prepaid Energy Meter on Proteus	[5]
Proposed the GSM based smart energy meter with the idea to computerize billing procedures and consumption of electric power	[6]
Proposed Pre-Post-Paid Smart Energy Meter with the addition of alarm and theft control	[7]

3. BLOCK DIAGRAM

As seen from figure 1, the meter starts its display pulse with unit. Then, it checks for the message, whether it has been received or not because all the communication between energy meter and the user is done through text messages. As the message is received it checks for authentication and dues. If there are any dues it disconnects the power supply till the dues are cleared. As soon as the dues are cleared it read the data in the memory and send pulse to the authenticated number. Then it checks for the power status, if it's ON then it directly goes to first step which displays the pulse, unit and start counting the unit (increment pulse and unit), the balance reduces with the consumption of the load. At a particular balance, the user is alerted through an SMS. The messages will be beneficial for the user to take required actions. If the power is off, then it only displays the pulse and unit.

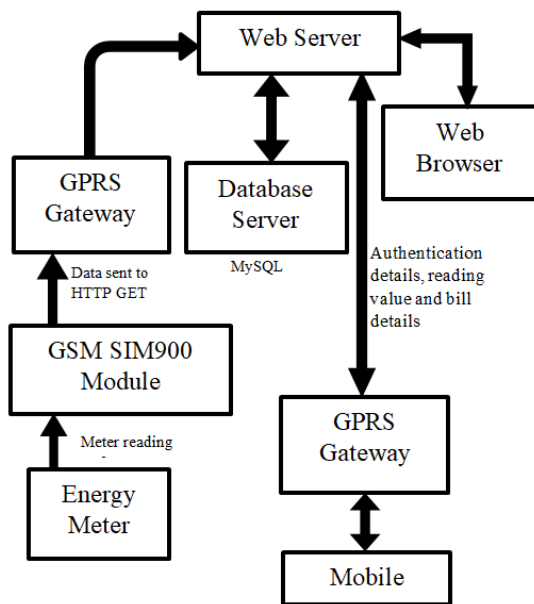


Figure 1: Block diagram

4. HARDWARE DESCRIPTION

Table 2: Hardware Description

S. No.	Component	Description
1.	Energy Meter	Unit consumption standard ratings = 1600 imp/kWh and 3200 imp/kWh. Indicates the calibration of LED blinks for 1600 times and 3200 times respectively that will indicate 1 unit energy consumption.
2.	Arduino UNO	Open-source microcontroller based on ATmega328P microchip. The board is equipped with 6 analog pins and 14 digital pins used for interfacing. The circuit designed has connection of Arduino with energy meter through optocoupler.
3.	GSM Module SIM900	Global System for Mobile Communication (GSM) is used for establishing the communication between the GSM system and a computer. It requires SIM (Subscriber Identity Module) card to activate the communication between two or more networks. For identification, it has IMEI (International Mobile Equipment Identify) number.
4.	Optocoupler 4N35	It galvanically separates the microcontroller from any potentially dangerous voltage or current existing in its surrounding. It uses a short optical transmission path for transferring of signal to different elements of circuit, while keeping them electrically remote.
5.	LCD Module 16x2	It is an electronic display. For producing a visible image, it uses a liquid crystal. Commonly 16x2 LCD display is used for embedded projects. In this each character is being displayed in a 5x7-pixel matrix.

AT command:

AT is the abbreviation of Attention. AT commands are used to communicate with GSM module. Every command line starts with "AT" or "at".

Table 3: Few AT Commands

Command	Description
AT+CMGS	Send SMS message to GSM
AT+CMSS	Send SMS message from storage
AT+CMGR	Read SMS message
AT+CMGW	Write message to memory
AT+CMGC	Send command
AT+CMMS	More messages to send
AT+CMGL	List all the messages

5. METHODOLOGY

The interfacing of components will go in serial manner.

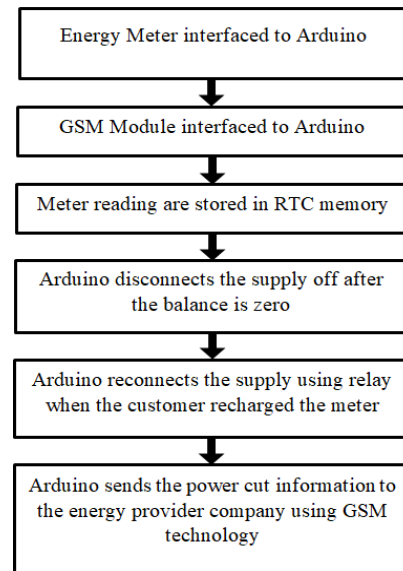


Figure 2: Methodology

As depicted in Figure 2, energy meter is interfaced with the Arduino and GSM module. The meter reading will be stored in RTC memory that shows the unit consumed by the consumer.

Unit Calculation:

Pulsating LED will blink 3200 times to indicate the 1 unit of consumption. So, 3200 imp/kWh = 1 units. [8]

$$\text{Consumed unit} = \frac{\text{Number of pulses}}{3200}$$

Let's say number of pulses are 3000 then consumed unit can be calculated as,

$$\text{Consumed unit} = \frac{3000}{3200} = 0.9375$$

$$\text{Unit Charge} = \text{Consumed unit} \times \text{Rate of a unit (Rs.)}$$

Let's say rate of a unit is 10 Rs. then unit charge can be calculated as,

$$\text{Unit charge} = \text{Consumed unit} * \text{Rate of a unit (Rs.)}$$

$$\text{Unit charge} = 0.9375 * 10$$

$$\text{Unit charge} = 9.375 \text{ Rs.}$$

6. IMPLEMENTATION

The Proteus Design Suite is a software tool used primarily for Electronic Design Automation (EDA). The software is used to create schematics and electronic prints for manufacturing Printed Circuit Boards (PCBs).

Energy meter will continuously display the meter reading in form of pulse and unit. Then, it checks for the message, whether it has been received or not. All the communication between energy meter and the user is done through GSM communication. Energy meter received the message through GSM communication then it checks for authentication and dues. If any unauthorized person trying to access the system, then it sends alert to the energy provider company [9].

If there are any dues it disconnects the power supply till the dues are cleared. As soon as the dues are cleared it read the data in the memory and send pulse to the authorized number and it checks for the power status, if it's ON then it directly goes to first step which displays the pulse, unit and start counting the unit (increment pulse and unit), the balance reduces with the consumption of the load. At a particular balance, the user is alerted through an SMS. The messages will be beneficial for the user to take required actions. If the power is off, then it only displays the pulse and unit. The flow chart is shown in Figure 3.

Figure 4 show the Proteus Design circuit of portal-based energy meter. In this paper, Arduino is the controlling elements. Arduino are interfaced with LCD (16x2), GSM modem, Energy meter (Energy meter library not available so LED use for pulse and unit) with the help of optocoupler.

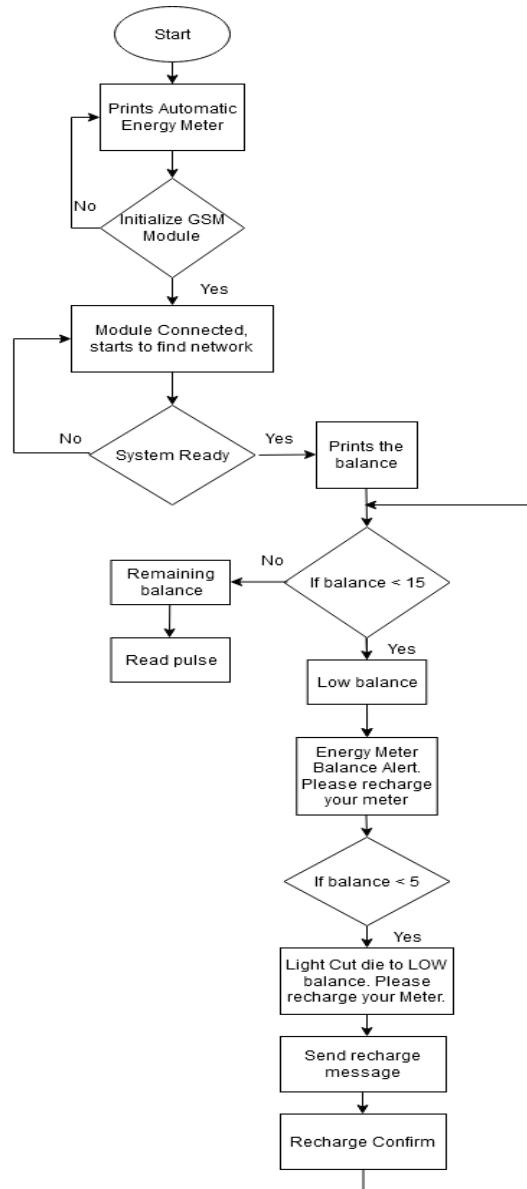


Figure 3: Flow Chart of Energy Meter Reading System

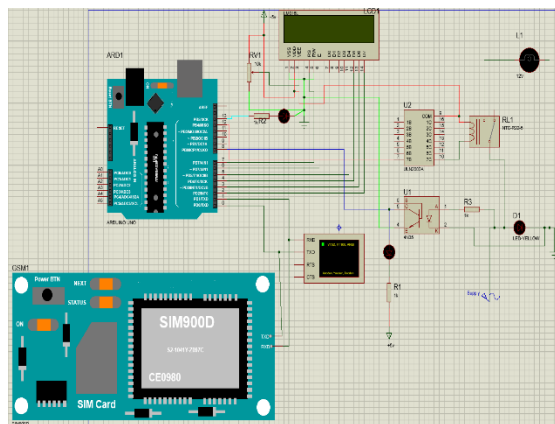


Figure 4: Proteus circuit diagram

Login and Registration page is shown in Figure 5 and 6 respectively. If the user is already registered,

then the user can easily login and can access the profile where all the details are mentioned related to energy meter.

If the user is not registered, then after filling all the necessary information and after getting the credentials the user can login and access the profile where all the details are mentioned related to energy meter.

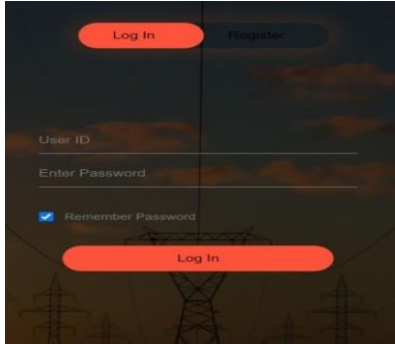


Figure 5: Login Page

User can access this section after login with the credentials as seen in figure 7. Here all the details are pre-filled and user can easily access to the information. If there is any detail which is not correct according to the user, then the user can edit and submit it and then the request will go to the energy provider for verification.

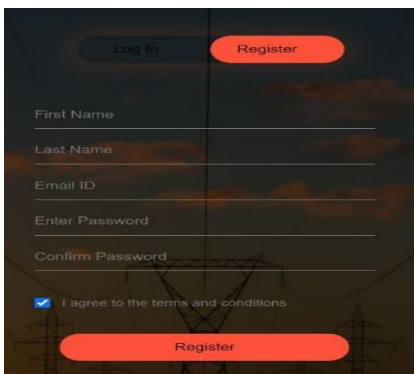


Figure 6: Registration Page



Figure 7: Connection Details

Meter information as seen from figure 8 is the second tab on the Index page. Here the user will see the meter consumption and other details

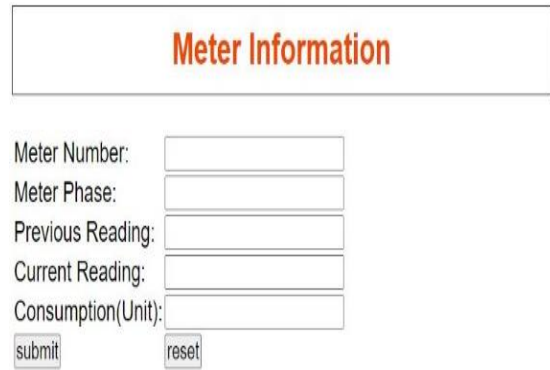


Figure 8: Meter information

As seen from figure 9, payment method is the third tab on the index page. Here the user can recharge the meter after the payment.

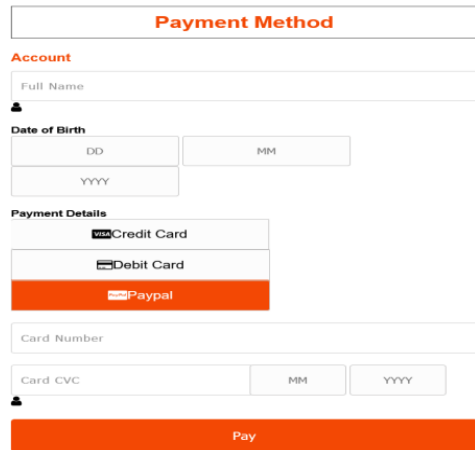


Figure 9: Payment Method

7. HARDWARE IMPLEMENTATION

Figure 10 shows all the hardware components and their Connection. The components used are Energy meter (single phase), LCD (16x2), GSM SIM900 module, Arduino UNO, relay, opto-coupler (4N35), ULN2003A (relay driver), LED's, Resistors.



Figure 10: Interfacing of Energy Meter with GSM Module, Arduino and LCD

VIII. CONCLUSION

This system is designed in such a way that electricity to be used is provided as long as the account has balance. The system allows the user to recharge the account using GSM. The consumer can see all the details (like meter specification, meter details, meter readings, consumed balance, remaining balance etc.) of the meter in real time on a web portal easily and recharge through the mobile number by sending commands to the energy meter through GSM module. So after the successful completion of the proposed product, it can be utilized in households, offices, factories. Also, with this new system one can save the energy very effectively.

REFERENCES

- [1]. Chan Tat-Wai, Lim Tat-Wai "Application of A-B and LV Power Line Standards for Remote Metering at Populous Residential Buildings" Proceeding of Asia Pacific IEEE/PES Transmission and Distribution Conference and Exhibition, (2002), Volume 2, Pages 969 – 974.
- [2]. Wayne L Stebbins "New Concepts in Electrical Metering for Energy Management" Proceeding of IEEE Transactions on Industrial Application, (1986), Volume IA-22(2), Pages 382–388.
- [3]. Abhinandan Jain, Dilip Kumar, Jyoti Kedia, "Design and Development of GSM Based Automatic Energy Meter Reading" International Journal of Computer Application (2012), Volume 47, Number 12, Pages 41-45.
- [4]. Mircea Popa "Gateway Design and Implementation an Automatic Meter Reading System Based on Power Line Communications" Proceeding of 7th International Conference on Networked Computing and Advanced Information Management (NCM), (2011), Pages 295-298.
- [5]. Heribertus Himawan, Catur Supriyanto, Adrin Thamrin, "Design of Prepaid Energy Meter based on PROTEUS", 2nd International Conference on Information Technology, Computer, and Electrical Engineering (ICITACEE), (2015), Pages 239-243.
- [6]. Abdul Ahad, Shuva Mitra, Ovishek Morshed, Imtiaj Khan, Rohan Sarker, Sayeed Shafayet Chowdhury, "Implementation and Feasibility Analysis of GSM Based Smart Energy Meter for Digitalized Power Consumption with Advanced Features", International Seminar on Intelligent Technology and Its Applications (ISITIA), (2018), Pages 403-407.
- [7]. Kumar Ask, Navneet Kumar Singh, Asheesh Kumar Singh, Dinesh Kumar Singh, Kundan Anand, "Design and Simulation of Smart Prepaid-Postpaid Energy Meter with Alarm and Theft Control", 5th IEEE Uttar Pradesh Section International Conference on Electrical, Electronics and Computer Engineering (UPCON), (2018)
- [8]. Sneha Chaudhari, Purvang Rathod, Ashfaque Shaikh, Darshan Vora, Jignasha Ahir "Smart Energy Meter Using Arduino and GSM", International Conference on Trends in Electronics and Informatics ICEI2017, (2017)
- [9]. Abhinandan Jain, Dr. Dilip Kumar, Jyoti Kedia "Smart and Intelligent Automatic Energy Meter Reading System", International Journal of Engineering Research and Technology (2012), Volume 1 Issue 3.